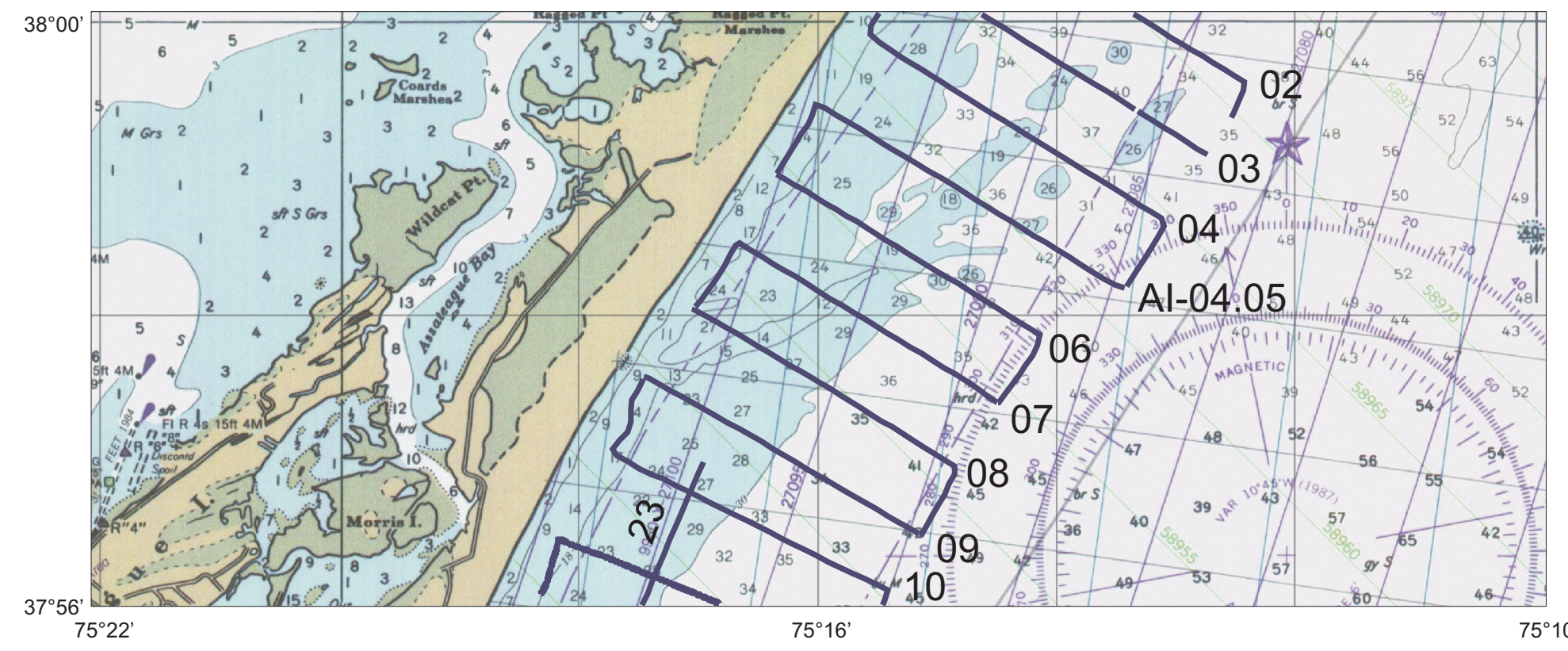
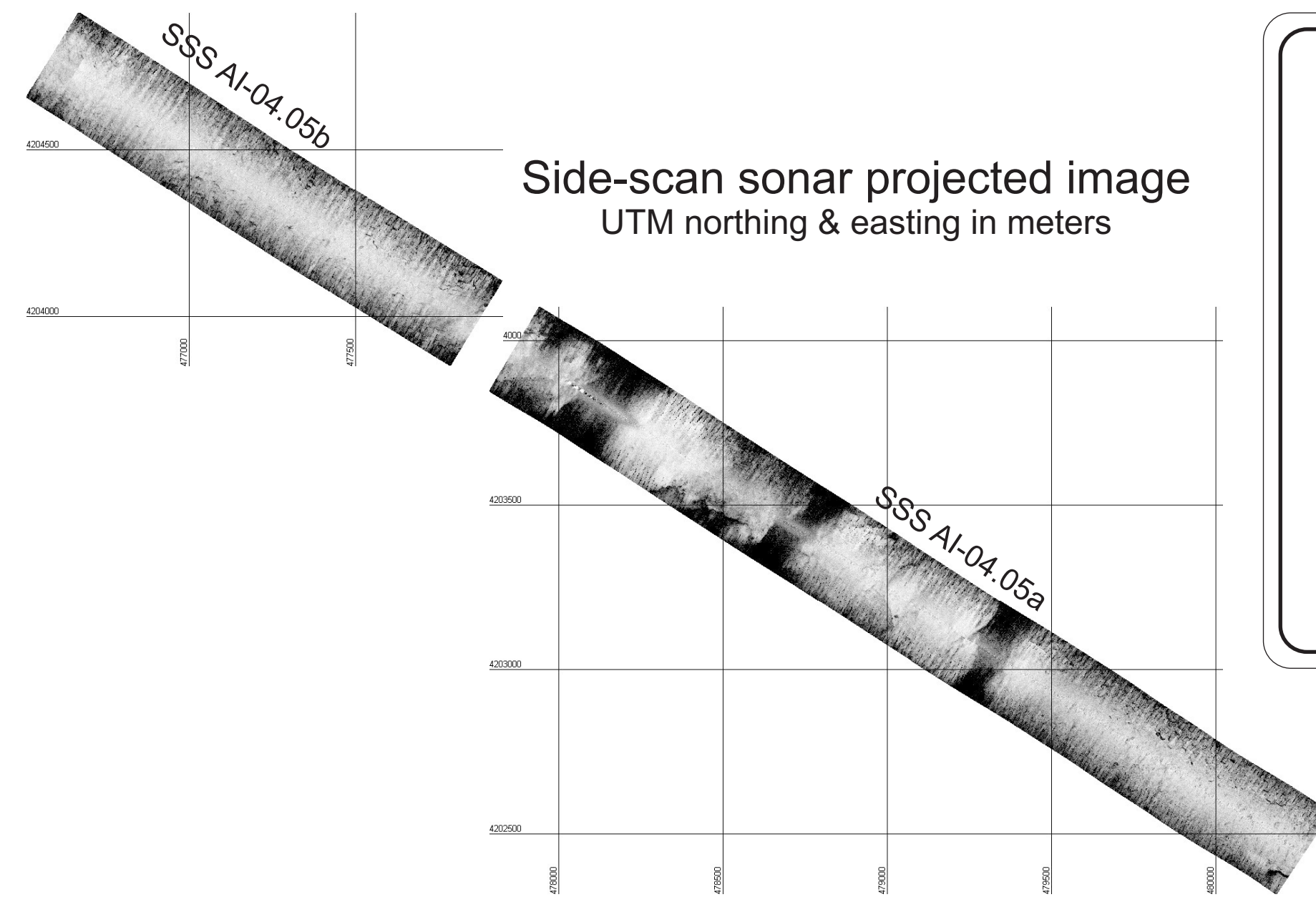


Survey tracklines



Location of line AI-04.05



Assateague Island Geologic Investigation
 Atlantic Shoreface – Virginia Section 2005

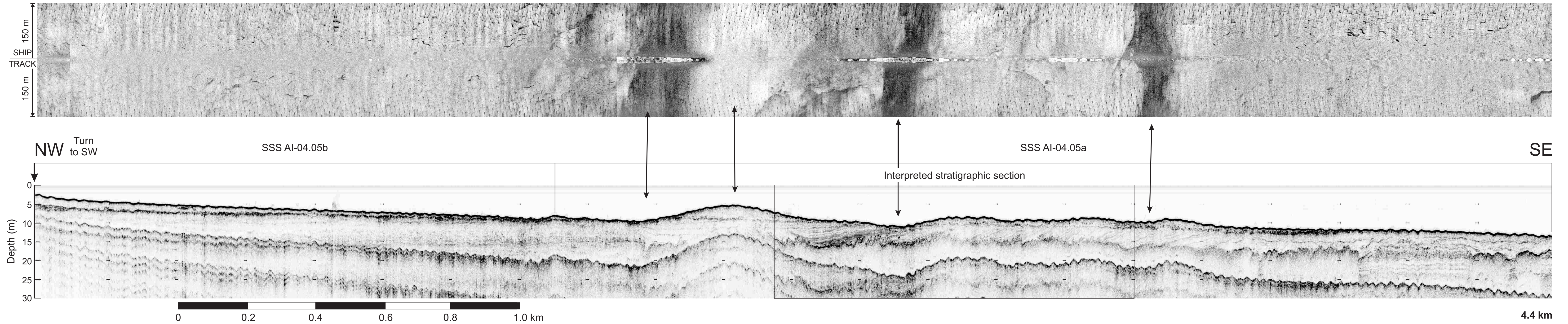
Seismic and side-scan sonar line **AI-04.05**

Principal Investigators:
 David Krantz & Douglas Levin

Supported by the National Park Service
 North Atlantic Cooperative Ecosystem Studies Unit

SSS AI-04.05b

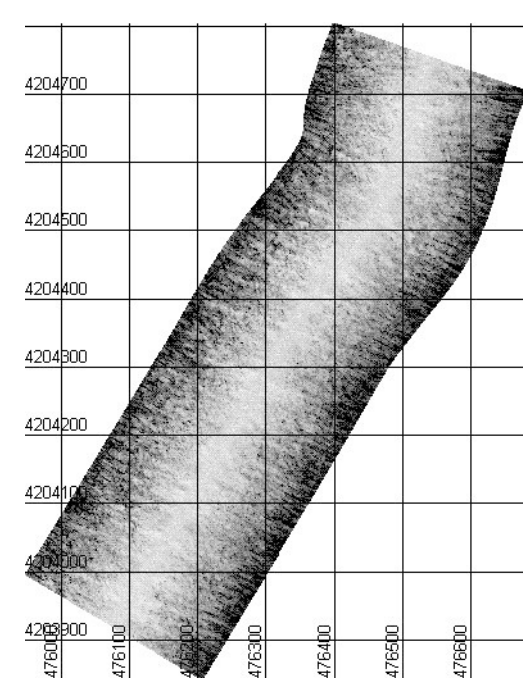
SSS AI-04.05a



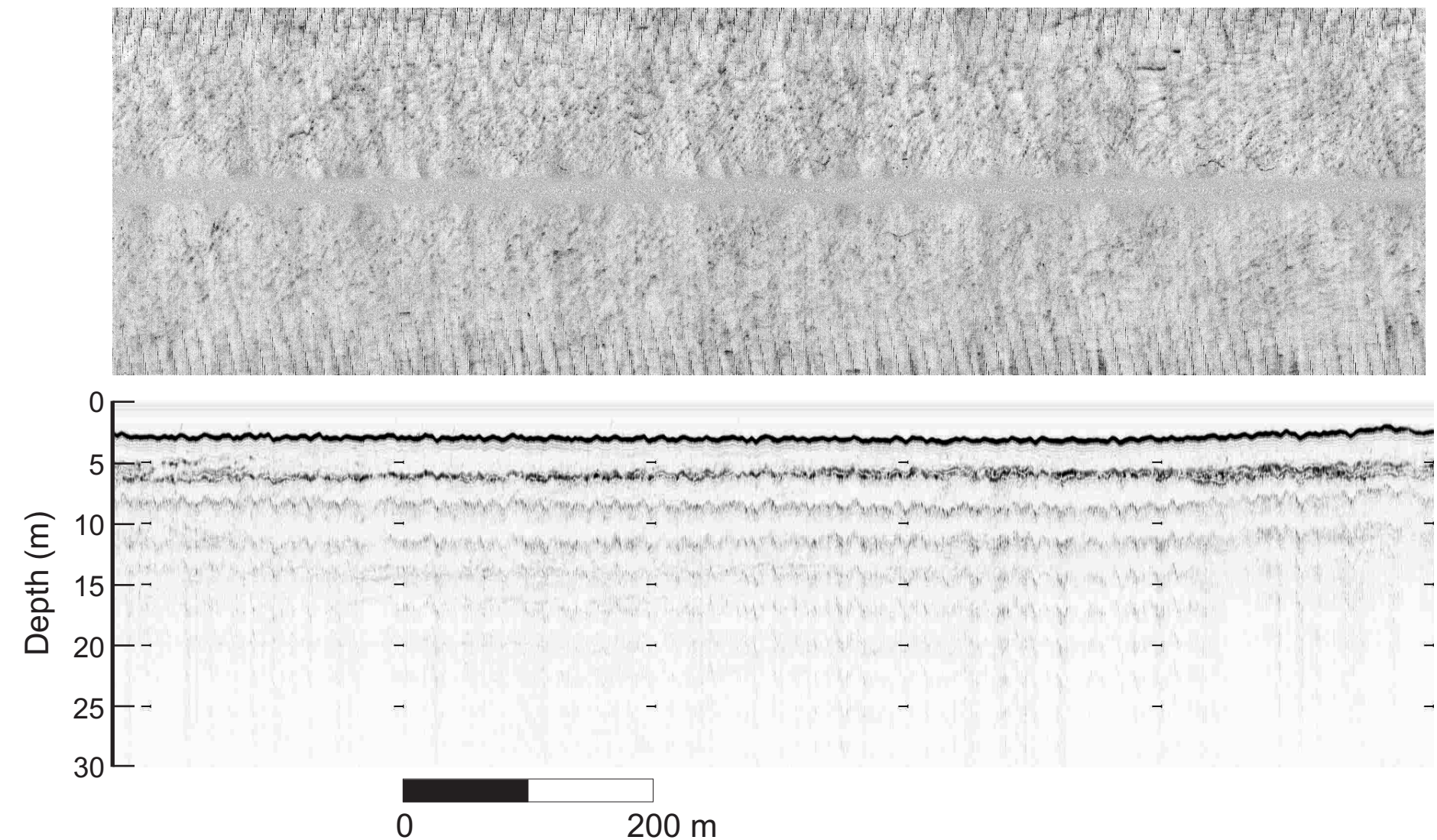
Shore-parallel section

Nearshore

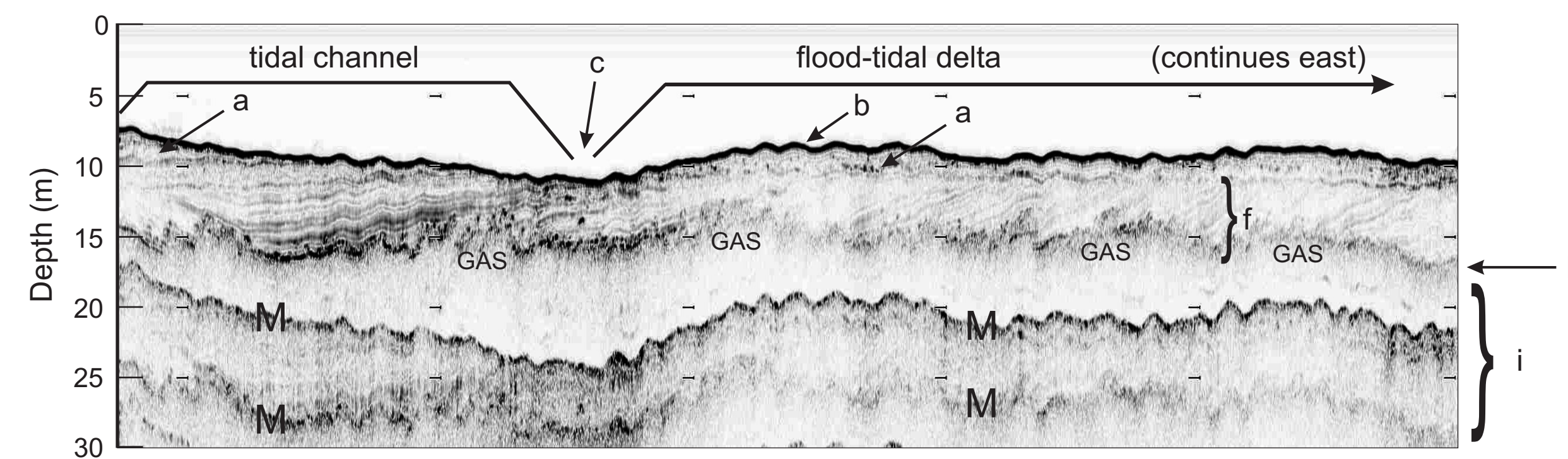
SSS projected image



SW SSS AI-04.05c shore NE



Interpreted stratigraphic section



Interpretation

- a ravinement surface beneath shoal
- b offshore shoal ~1.5 m thick
- c ravinement exposed on seafloor
- f flood-tidal delta, cross-bedded sand dipping landward
- h approximate base of Holocene sequence
- i deeper reflections obscured by gas
- GAS methane gas in sediment
- M multiples