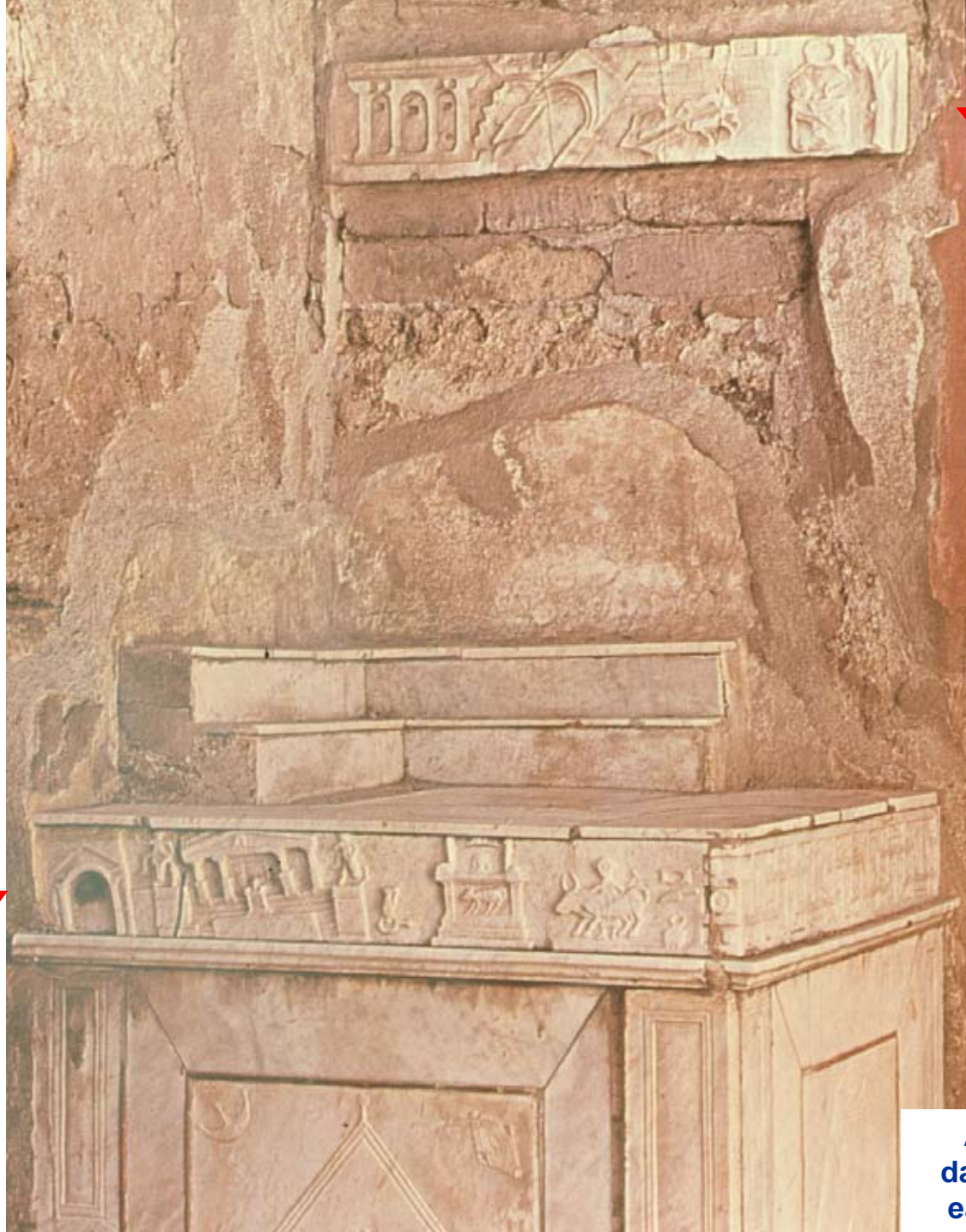


Examples of Earthquake Damage Due to Ground Shaking

SL_H EQ-5



Ancient depiction of damage from the 62 AD earthquake in Pompeii



Ancient depiction of damage from the 62 AD earthquake in Pompeii



18th century
woodcut depicting
the aftermath of
the 1755
earthquake in
Lisbon, Portugal

1906 San Francisco, CA
earthquake (est. M 7.8)

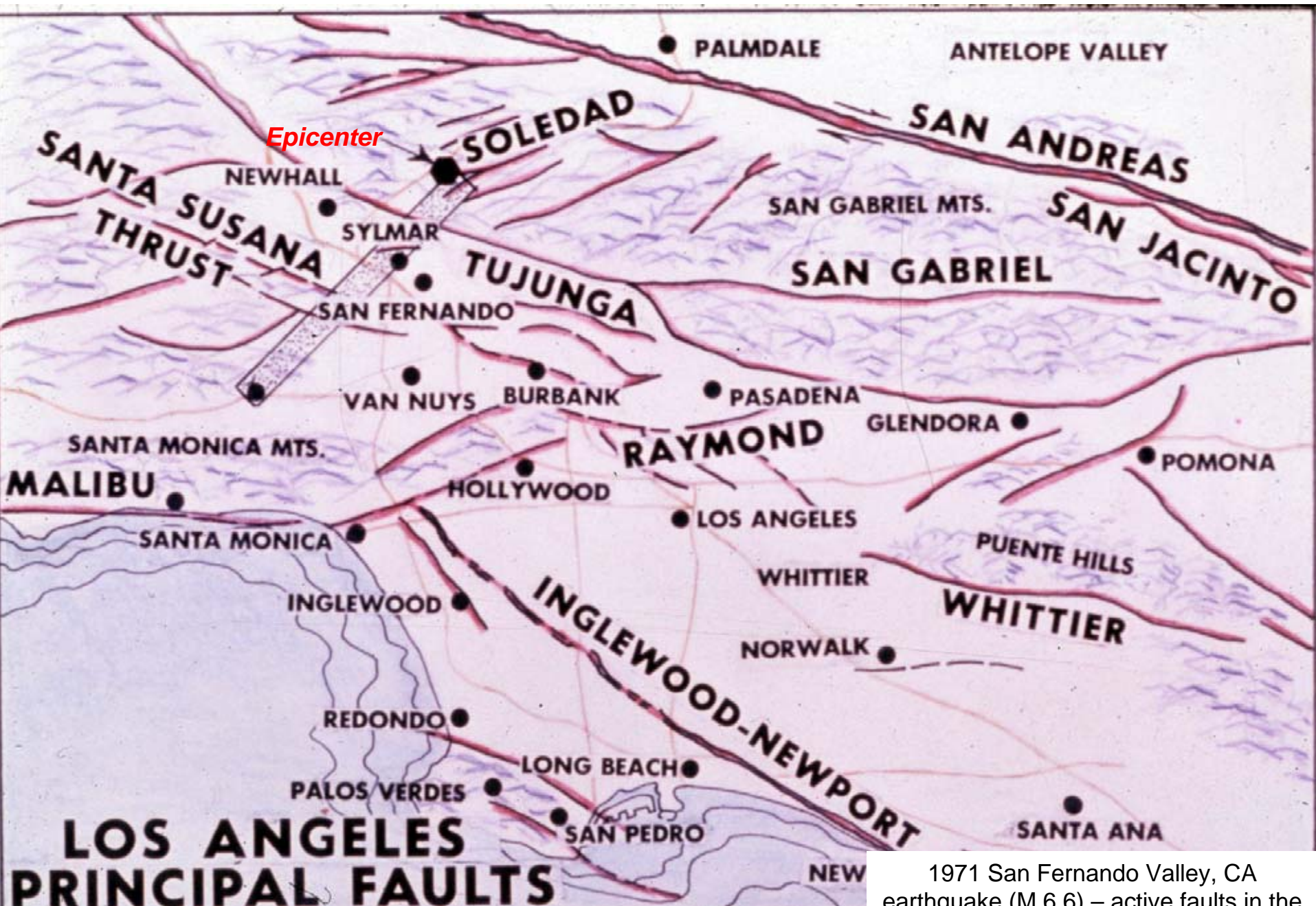


City Hall Tower before and after the Quake.



1964 Alaskan earthquake (M 8.5) –
damage from ground shaking

**1971 San Fernando Valley,
CA Earthquake
(M 6.6)**



1971 San Fernando Valley, CA earthquake (M 6.6) – active faults in the Los Angeles region



1971 San Fernando Valley, CA
earthquake (M 6.6) – San Fernando
Valley



1971 San Fernando Valley, CA earthquake (M 6.6) – damage from ground shaking (note time on clock)



1971 San Fernando Valley, CA
earthquake (M 6.6) – Rayleigh waves
crossing a field during an aftershock



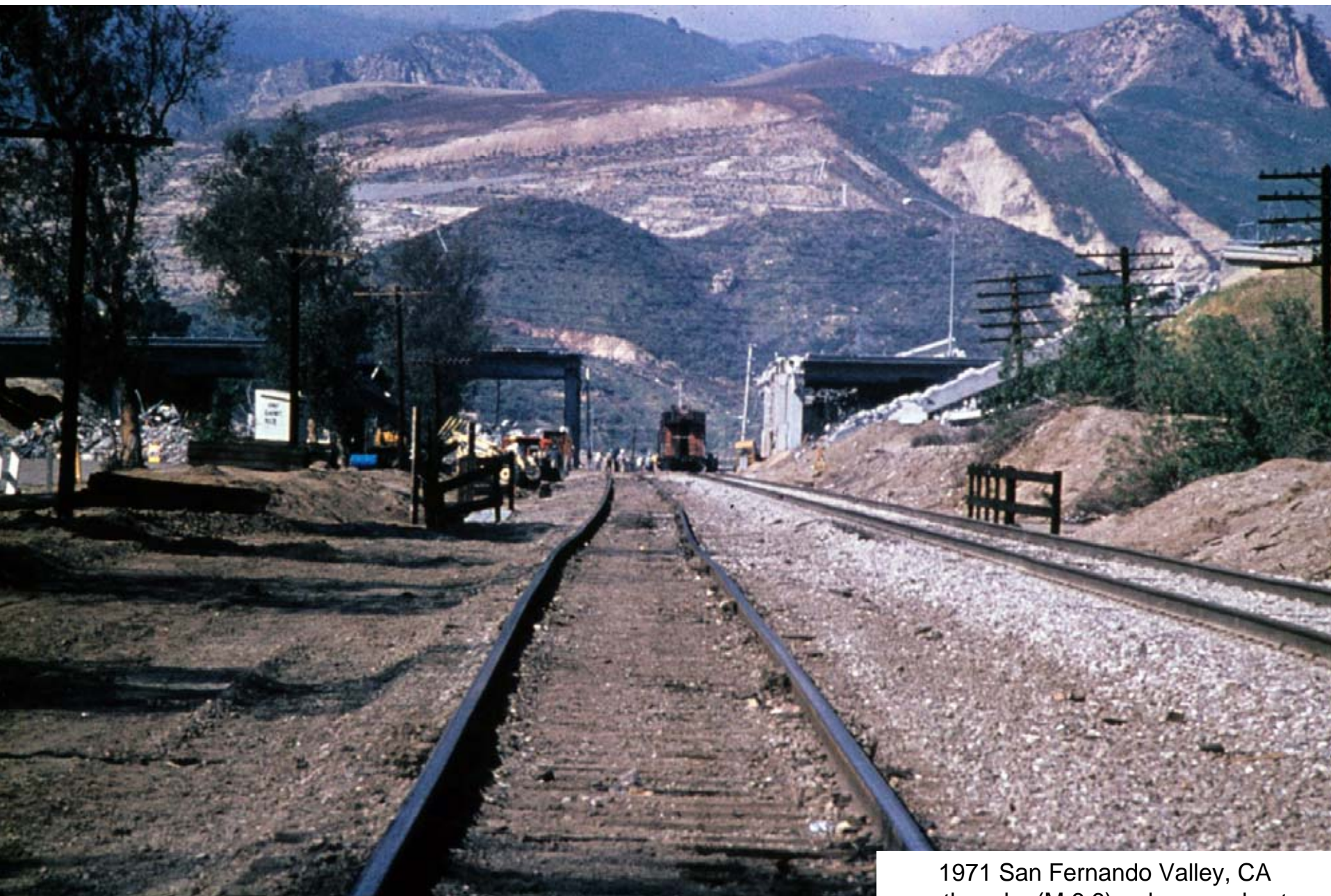
1971 San Fernando Valley, CA
earthquake (M 6.6) – damage due to
ground shaking



1971 San Fernando Valley, CA
earthquake (M 6.6) – damage due to
ground shaking



1971 San Fernando Valley, CA
earthquake (M 6.6) – damage due to
ground shaking



1971 San Fernando Valley, CA earthquake (M 6.6) – damage due to ground shaking



1971 San Fernando Valley, CA
earthquake (M 6.6) – damage due to
ground shaking



1971 San Fernando Valley, CA
earthquake (M 6.6) – damage due to
ground shaking



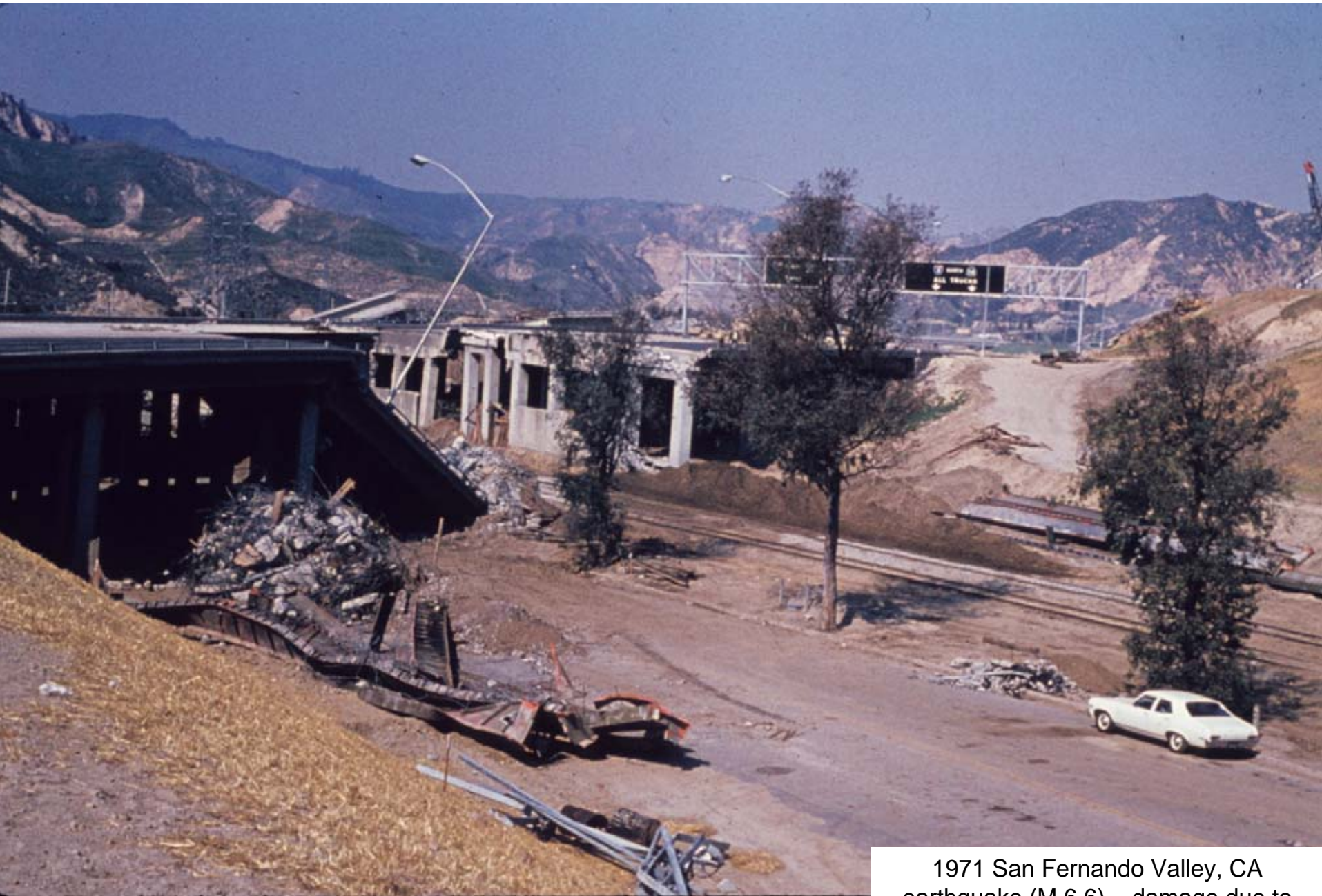
1971 San Fernando Valley, CA
earthquake (M 6.6) – hospital damaged
by ground shaking



1971 San Fernando Valley, CA earthquake (M 6.6) – hospital damaged by ground shaking



1971 San Fernando Valley, CA earthquake (M 6.6) – hospital damaged by ground shaking



1971 San Fernando Valley, CA earthquake (M 6.6) – damage due to ground shaking



1971 San Fernando Valley, CA
earthquake (M 6.6) – damage due to
ground shaking



1971 San Fernando Valley, CA earthquake (M 6.6) – damage due to ground shaking



Damage from the 1971 San Fernando Valley, CA earthquake



1971 San Fernando Valley, CA
earthquake (M 6.6) – damage due to
ground shaking



1971 San Fernando Valley, CA
earthquake (M 6.6) – damage due to
ground shaking

1985 Mexico City Earthquake

(M 8.1)



1985 Mexico City earthquake (M 8.1) –
damage from ground shaking



1985 Mexico City earthquake (M 8.1) –
damage from ground shaking



1985 Mexico City earthquake (M 8.1) –
damage from ground shaking



1985 Mexico City earthquake (M 8.1) –
damage from ground shaking



1985 Mexico City earthquake (M 8.1) –
damage from ground shaking



1985 Mexico City earthquake (M 8.1) –
damage from ground shaking